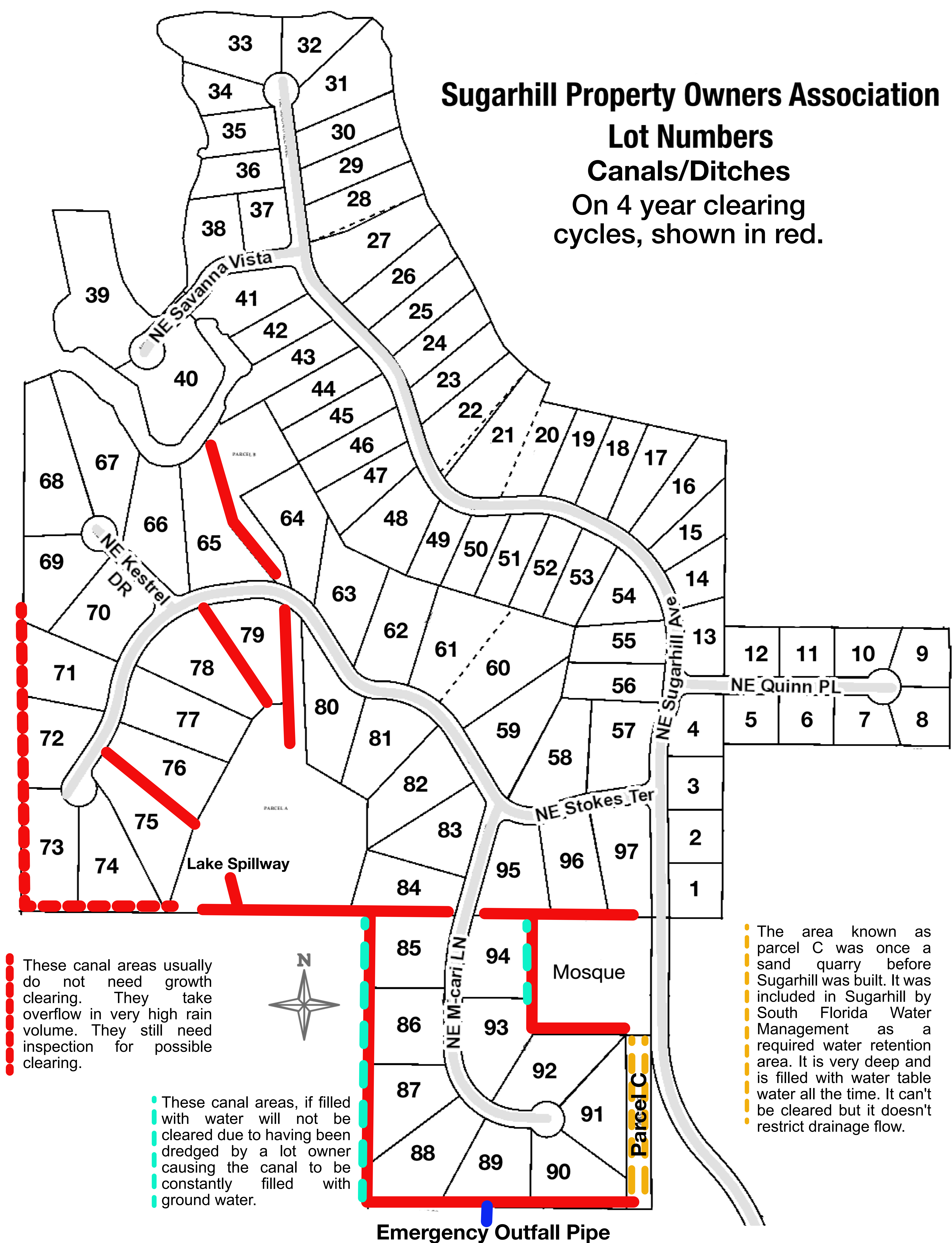


Sugarhill Property Owners Association
Lot Numbers
Canals/Ditches
On 4 year clearing
cycles, shown in red.



These canal areas usually do not need growth clearing. They take overflow in very high rain volume. They still need inspection for possible clearing.

These canal areas, if filled with water will not be cleared due to having been dredged by a lot owner causing the canal to be constantly filled with ground water.

The area known as parcel C was once a sand quarry before Sugarhill was built. It was included in Sugarhill by South Florida Water Management as a required water retention area. It is very deep and is filled with water table water all the time. It can't be cleared but it doesn't restrict drainage flow.

Emergency Outfall Pipe